



Defining the Future of Life-Saving Diagnostics at the Point of Care

Corporate Presentation | August 31, 2022

© 2022 Hyperfine, Inc.

Forward Looking Statements

This presentation includes forward-looking statements within the meaning of the federal securities laws, which are made pursuant to the Safe Harbor Provisions of the Private Securities Litigation Reform Act of 1995. Any statements contained in this call that relate to expectations or predictions of future events, results, or performance are forward-looking statements. All forward-looking statements, including, without limitation, those relating to our operating trends and future financial performance, the impact of COVID-19 or geo-political conflict such as the war in Ukraine, on our business and prospects for recovery, expense management, expectations for hiring, physician training and adoption, growth in our organization, market opportunity, commercial and international expansion, regulatory approvals, and product development are based upon our current estimates and various assumptions. These statements involve material risks and uncertainties that could cause actual results or events to materially differ from those anticipated or implied by these forward-looking statements. Accordingly, you should not place undue reliance on these statements. For a list and description of the risks and uncertainties associated with our business, please refer to the “Risk Factors” section of our 10-Q filed with the Securities and Exchange Commission on August 11, 2022.



Today, brain diagnostics are
single point-in-time and
delay the time from
door to discharge.



**Our mission is to transform
healthcare by creating
access to life-saving
diagnostics and actionable
data at the patient bedside.**

HYPERFINE

Imaging is a Large Market Poised for Disruption

>100,000

Swoop Installation Opportunities
across Hospitals and
Outpatient Care Facilities



>\$23 Billion

Total Addressable Market



We are Transforming Medical Imaging with Swoop®



MRI 1.0
1980



MRI 2.0
1990



MRI 3.0
FDA Cleared 2020

Swoop® is the Next Generation of MRI

Patent protected noise cancellation system enables clinical-grade images



Portable low-field MRI



FDA Cleared in 2020



Reimbursed under existing imaging codes:
MRI Brain without Contrast: 70551



>140 issued patents worldwide;
>80 issued patents in the U.S.



Installed base of **92 units***
as of 2Q 2022 end



Clinical Applications including ICU
Follow-Up and Post-Operative



*Installed base includes commercial system installations (which make up total revenue), grant fulfillment installations, and research unit installations

Swoop® Brings MRI to the Patient



Acute Care Settings



Intensive Care Units
and Operating Rooms



Global Health

- Swoop is designed to enable **rapid diagnoses and treatment** for patients regardless of income, resources, or location
- Produces **high-quality images at low magnetic field strength**, allowing clinicians to quickly scan, diagnose, and treat patients
- Wheeled **directly to a patient's bedside**, plugged into a **standard electrical wall outlet**, and **controlled by an iPad®**

Clinical & Workflow Benefits



Adverse events
occur in
22-46%
of cases
during transport

Numerous challenges with conventional MRI :

High-cost limits accessibility



Complex site requirements and upgrades



Scheduling delays lead to longer length of stay



Consumption of valuable personnel resources



Risk of adverse events during transportation



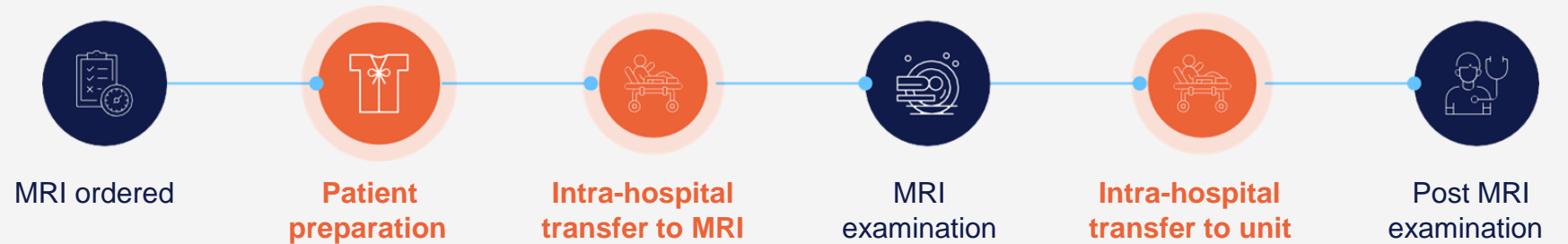
Maintaining connection to life support equipment



Hyperfine Workflow Benefits



Traditional MRI workflow (25.8 hours)



Hyperfine workflow (90 mins, 94% reduction in total workflow time)



Swoop Clinical Use Cases



Clinical Validation of Hyperfine

“Game changer is a good way to put it [...] being able to do the level of sophisticated imaging in an ICU that MRI can provide.”

Dr. Fady Charbel, MD, FAANS, FACS



“Hyperfine provides me with an opportunity to acquire the information, to interpret the information, and to make a decision based on the information that’s in front of me.”

Dr. Shahid Nimjee, MD, PhD, FAANS, FAHA



“Portable MRI should be used to image any patients in ICUs in any [clinical] setting.”

Dr. Michael Schulder, MD, FAANS



Over 40 conference presentations and publications discussing clinical benefits for:

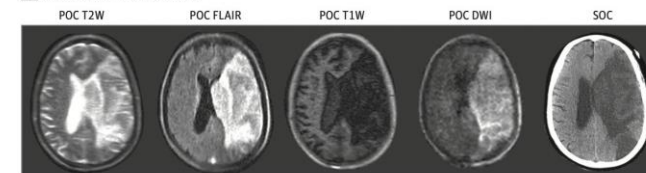
Stroke | Hydrocephalus | Hematoma | Multiple sclerosis | Tumor resection

JAMA Neurology | **Original Investigation**

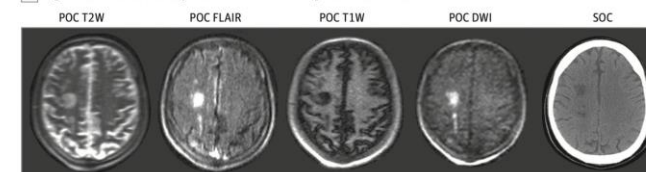
Assessment of Brain Injury Using Portable, Low-Field Magnetic Resonance Imaging at the Bedside of Critically Ill Patients

Kevin N. Sheth, MD; Mercy H. Mazurek, BS; Matthew M. Yuen, BA; Bradley A. Cahn, BS; Jill T. Shah, BA; Adrienne Ward, RN; Jennifer A. Kim, MD, PhD; Emily J. Gilmore, MD; Guido J. Falcone, MD, ScD, MPH; Nils Petersen, MD, PhD; Kevin T. Gobeske, MD, PhD, MPH; Firas Kaddouh, MD; David Y. Hwang, MD; Joseph Schindler, MD; Lauren Sansing, MD, MS; Charles Matouk, MD; Jonathan Rothberg, PhD; Gordon Sze, MD; Jonathan Siner, MD; Matthew S. Rosen, PhD; Serena Spudich, MD, MA; W. Taylor Kimberly, MD, PhD

C Large left middle cerebral artery



D Right anterior cerebral artery and middle cerebral artery watershed infarctions



Recent Highlights:

Science Advances, April 2022:

Portable, Low-Field MRI Enables Highly Accessible and Dynamic Bedside Evaluation of Ischemic Stroke

- Imaged 50 confirmed acute ischemic stroke patients and accurately detected infarcts in 45/50 patients (90%); captured lesions as small as 4 mm

American Journal of Neuroradiology, April 2022:

Implementation of a Low-Field Portable MRI Scanner in a Resource-Constrained Environment: Our Experience in Malawi

- Acquired >260 brain scans; concluded use may lead to faster diagnosis and expedited treatment, including in comatose patients in the E.D. and bed-bound patients with sudden onset neurologic deficits

Nature Communications, August 2021:

Portable, Bedside, Low-Field Magnetic Resonance Imaging for Evaluation of Intracerebral Hemorrhage

- Imaged >140 patients and correctly identified ICH in over 80% of confirmed cases

14 Published Manuscripts Across Renowned Journals



Use Case: ICU

Patient Delays to Transfer in the ICU Creates Major Unnecessary Costs for Hospitals, is “Common and Costly”

Estimated \$300/hr for delays, >\$22,000/week for hospital (>\$1M/year) for large academic center

Imaging capabilities of MRI, CT and Ultrasound **should be available 24/7/365** at all facilities.

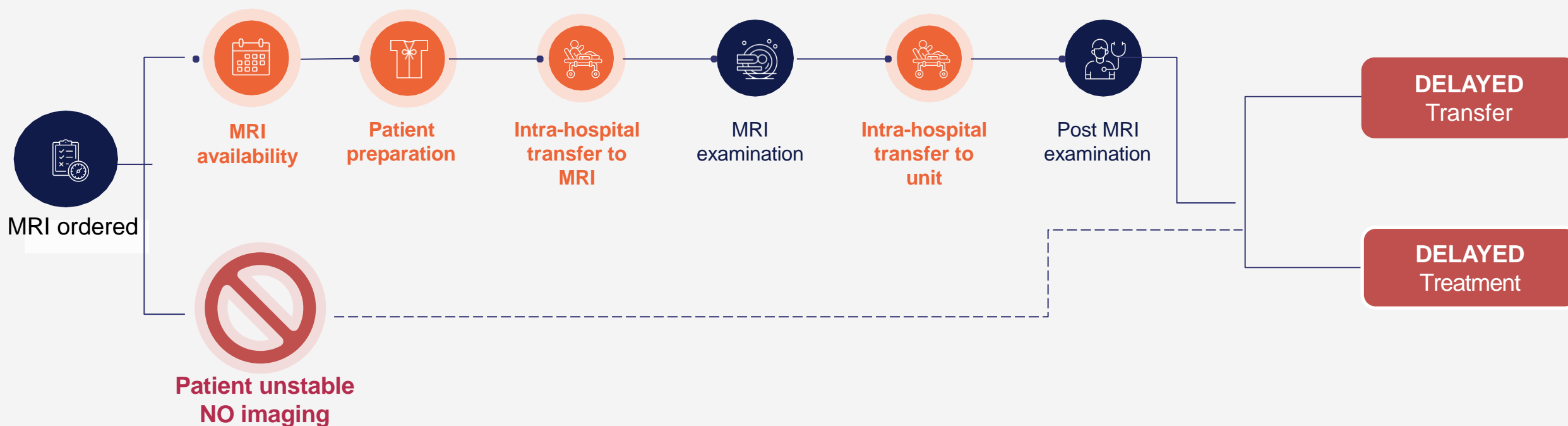
In reality, patients can **wait more than 24 hrs for MRI availability**, resulting in cost for both the patient and the hospital, taking up an ICU bed.



If only there was a way to improve access to imaging...

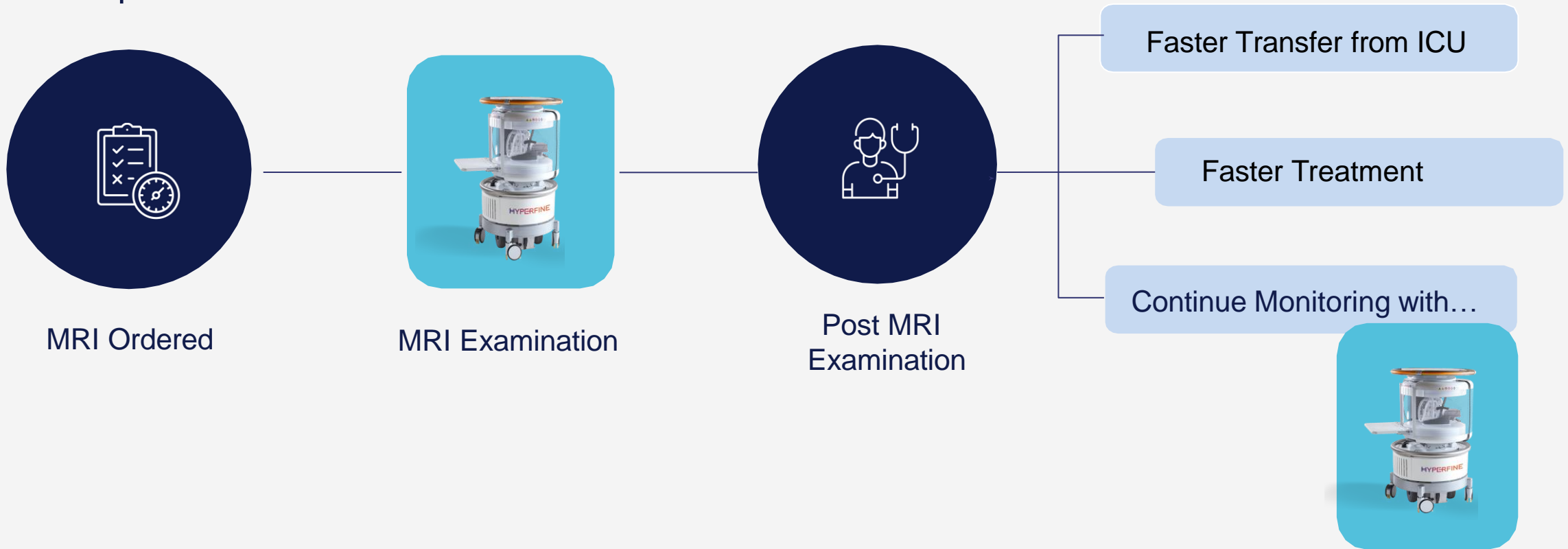
Current ICU Imaging Workflow with Conventional MRI

Traditional MRI workflow can lead to **prolonged delays** in patient care and **higher resources consumption**



Improved ICU Imaging Workflow with Swoop

Portable MRI workflow enables **timely care** for earlier discharge by bringing brain imaging to the patient's bedside



Word from the Clinician



Using the scanner in the ICU is an important use case. What Swoop can offer versus a conventional MRI is the **flexibility** and the usefulness of having it right there. It **favors time** in a situation when you need something acute.



Dr. Jennifer Moliterno-Gunel, Neurosurgeon
Yale University School of Medicine

Swoop's Potential Benefits in the ICU



Reduced time to diagnosis

Swoop workflow is significantly faster than conventional MRI



Reduced patient care interruption

Transport time (2-3 hours) interrupts patient care and impacts staffing for entire ICU¹



Reduced adverse events associated with patient transport

Adverse events occur in up to 46% of transported patients.



Reduced costs associated with length of stay

Shortening time to diagnosis, avoiding interruptions in care, and preventing adverse events



Optimized staffing in the ICU

Time consuming transport affects ICU staff: nurse, respiratory therapist, anesthesia, transport, and practitioner.



Reduced exposure to ionizing radiation

Ionizing radiation from CT used for serial follow-up scans = risk to patient and staff

1. Hyperfine, Care Area - Acute Mental Status Change, Page 1a

Use Case: Stroke

Hyperfine Provides Compelling Platform for Stroke Diagnosis

15 million

people worldwide suffer a stroke annually



MRI scans are better at **detecting ischemic stroke damage** compared to CT scans



Stroke is the **2nd leading cause of death** globally



MRI use for stroke has been limited due to **lack of access** to this expensive equipment and experienced neuroradiologists to interpret the results.



87% strokes are ischemic strokes

Hyperfine offers an affordable MRI platform that can perform **diffusion imaging**

for stroke diagnosis at the patient's bedside, images can be shared securely with neuroradiologists around the world



Stroke Diagnosis Confirmed

62-year-old male

Presented with new left sided weakness and tremor



Pipeline Opportunities

Innovative R&D Engine Designed to Expand Product Roadmap

Potential benefits:



Improved
usability



Expanded
Addressable
Market



Lower cost
of goods



Automated
Stroke
Detection



Financial Profile

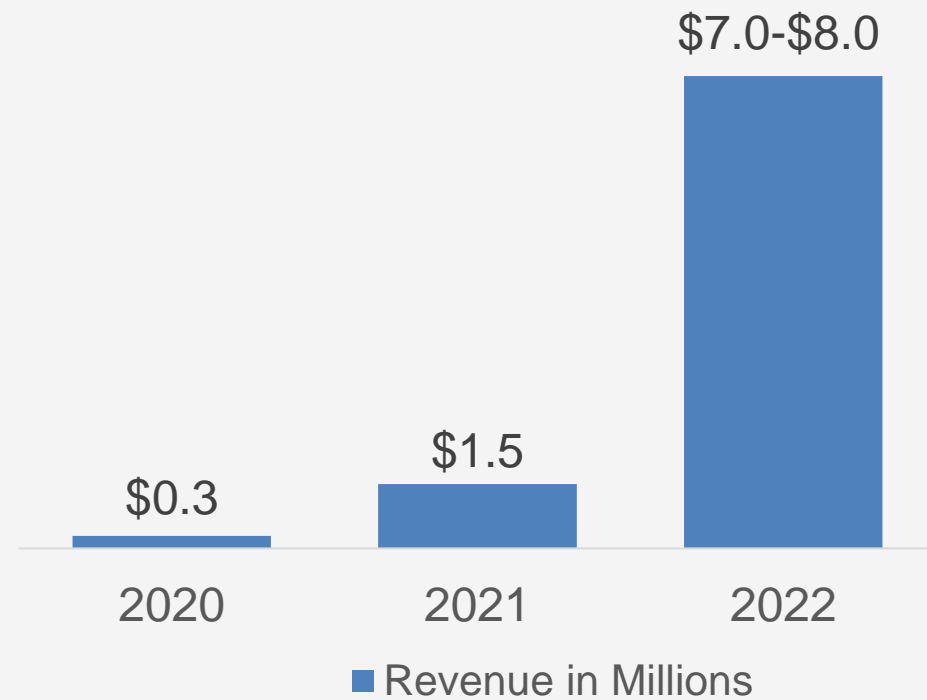
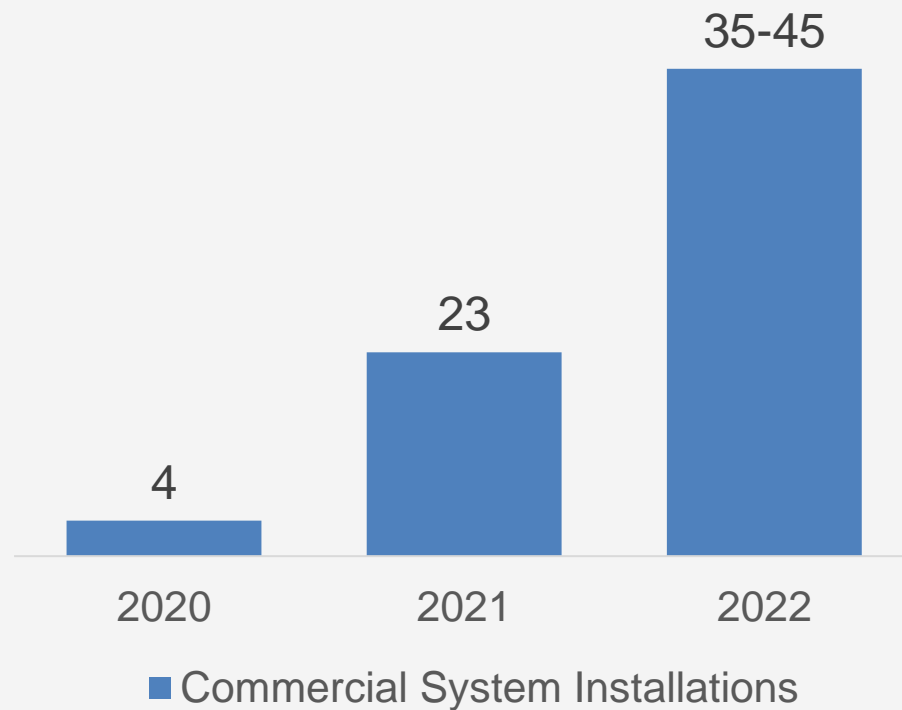
1H 2022 Financial Results & Total Installed Units

- **\$3.042** million in 1H 2022 revenue
 - **20** commercial Swoop system installations
 - Total installed base* of **92** systems globally
-

Commercial system installations reflect device sales and subscription services through commercial agreements (commercial sales) or through research transfer agreements (“RTA”) sales. Commercial sales are made to hospitals and other healthcare providers as direct sales of devices and software subscription services or through subscriptions for the use of the device and software. RTA sales represent the sale of Swoop units for research use purposes.

2022 Financial Guidance

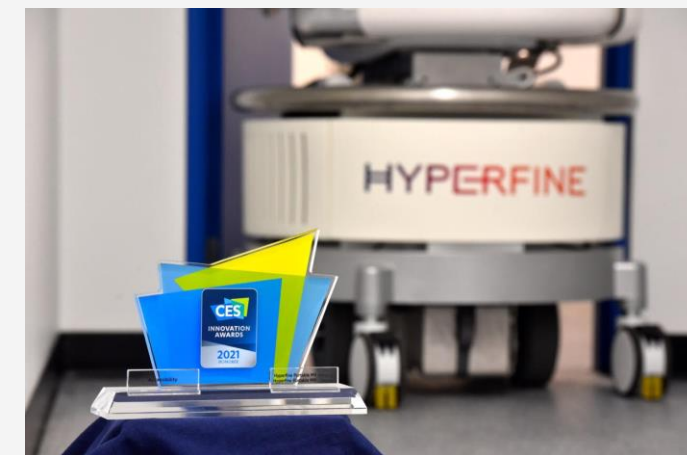
- \$7.0-\$8.0 million in total revenue for full year 2022
- 35-45 commercial system installations in full year 2022



**2022 bar chart values reflect fiscal year financial guidance, not reported results*

Major Recent Accomplishments

- **July 2022:** Partnered with Viz.ai to Enable New MR Imaging and Workflow Paradigm
- **June 2022:** Announces Expansion into Australia and New Zealand with Medical Device Registration and Notification
- June 2022: Received FDA Clearance for Two New Imaging Sequences
- **April 2022:** Swoop® Demonstrates High Accuracy for Identification and Evaluation of Ischemic Stroke in Study Published by Science Advances
- **February 2022:** Appointed Chip Truwit, M.D. as Senior Medical Director
- **December 2021:** Closed Business Combination with HealthCor Catalio Acquisition Corp. and Liminal Sciences, Began Trading under the Ticker "HYPR" on the Nasdaq Global Market



Leadership Team

Management Team with Proven Track Record of Success



**Scott
Huennekens**

Interim President &
Chief Executive Officer



**Alok
Gupta**

Chief Financial Officer



**Dr. Khan
Siddiqui**

Chief Strategy Officer &
Chief Medical Officer



**Tom
Teisseyre**

Chief Product Officer



**Mark
Hughes**

VP, Hardware Engineering
& Operations



**Scott
White**

Chief Commercial Officer



**Kyla
Pavlina**

Chief People Officer



**Neela
Paykel**

General Counsel & Chief
Compliance Officer

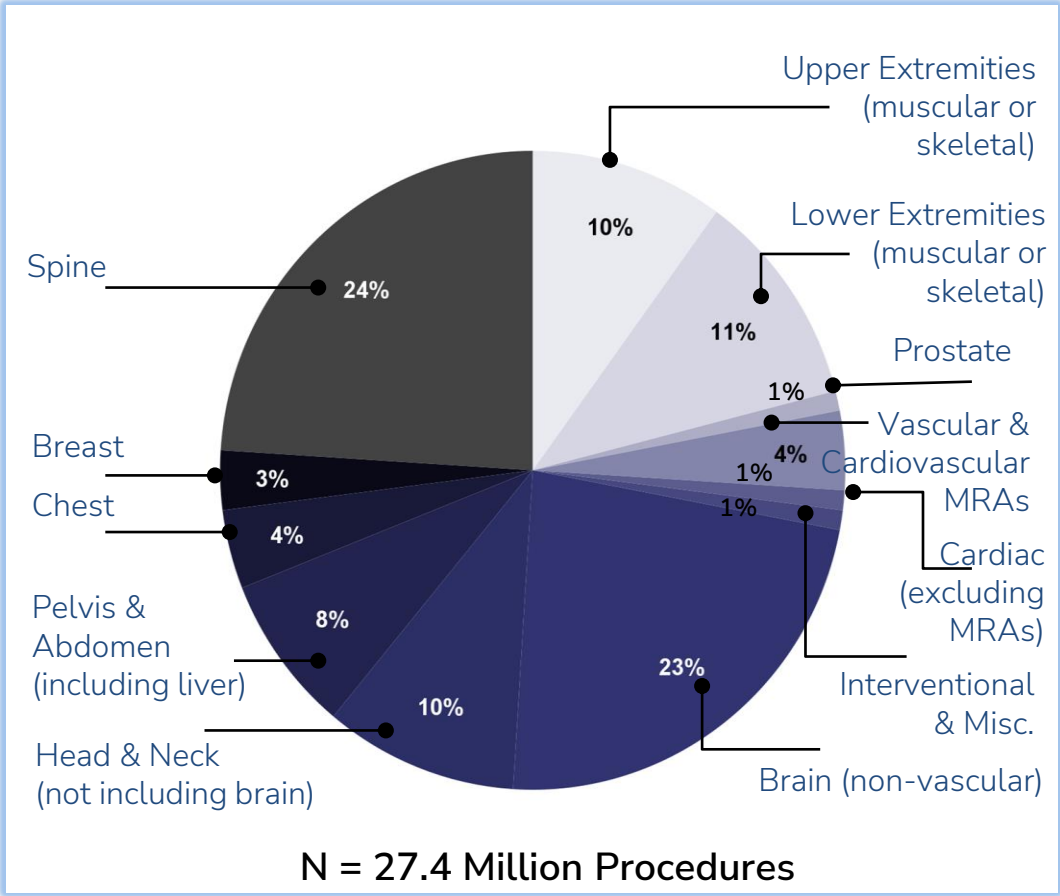
Thank You!



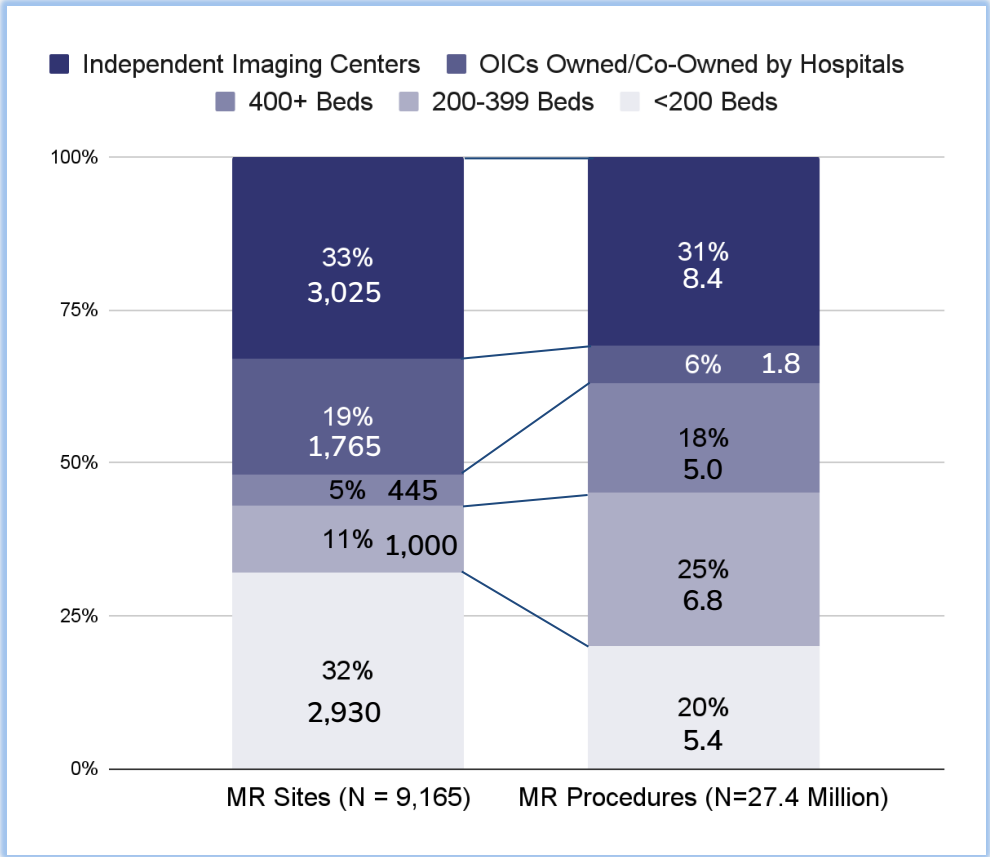
Appendix

Brain is the Largest MRI Market with Nearly 25% of MR Procedures

MR Procedure Mix, All Sites, by Percent, 2020



Distribution of MR Sites and Procedures, by Site Type, 2020



*Source: 2020 IMV MR Benchmark Report

© 2022 Hyperfine, Inc. | Confidential and Proprietary